

Comfort and Indoor Air Quality

CO₂, Temperature and Humidity Ambient Sensor

TX CO2 T&H AMB 600-123



- ✓ Indoor air quality measurement
- ✓ LoRaWAN & Enless LoRa mode
- ✓ High-capacity D-type battery
- ✓ Up to 5 years of autonomy
- ✓ Very long radio range

Technical Specifications

Physical Characteristics

| | |
|-----------------------------|---|
| Protection rating | NEMA 1 / IP40 |
| Application | Use in an indoor environment |
| Mounting | Wall-mounted |
| Operating temperature | -20 / +55°C |
| Operating relative humidity | 20-80% (non-condensing) |
| Operating altitude | < 2000m |
| Operating pollution degree | 3 |
| Power supply | Replaceable Lithium 3.6V D-type battery |
| Battery life | 2 years for a transmission every 30 minutes (SF9) |

Radio

| | |
|---------------------|--|
| Supported protocols | LoRaWAN (Class A) and Enless LoRa mode |
| Frequency | US915 |
| Addressing | LoRaWAN = DEVEUI, APPEUI, APPKEY (OTAA) Enless LoRa mode = Enless LoRa ID |
| Encryption | LoRaWAN = AES128 Enless LoRa mode = No encryption |
| Transmission power | 25mW (14 dBm) |

Measurements

CO2

CO2 measurement range 0 - 5000 ppm

CO2 measurement accuracy +/- 100 ppm

Temperature

Sensor measurement range -40 / +125°C

Sensor accuracy +/- 0.2°C

Sensor resolution 0.1°C

Humidity

Sensor accuracy +/- 2% RH

Sensor resolution 0.1% RH

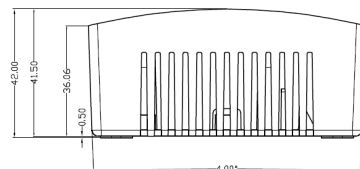
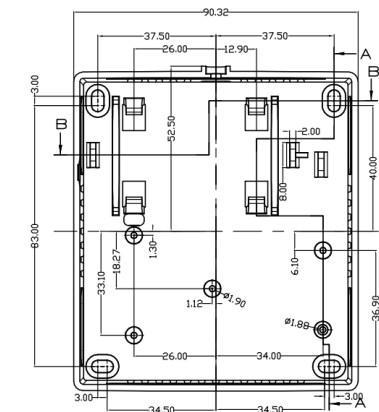
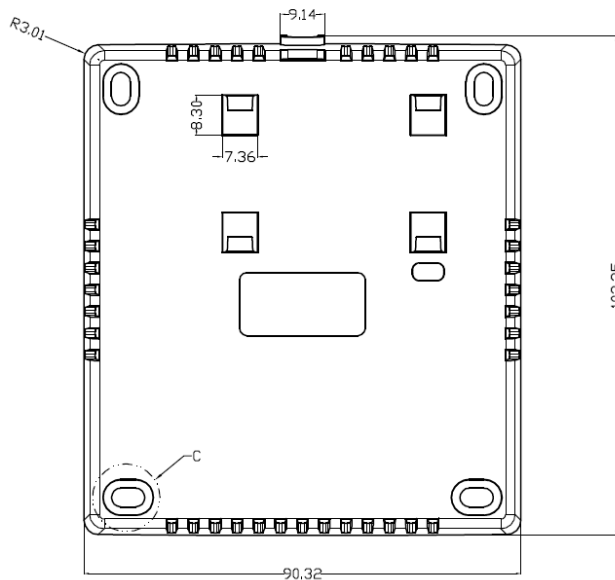
Certifications



Innovation, Science and
Economic Development Canada



Dimensions (mm)



DTM87-a



+33 (0)5 56 35 97 47



contact@enless.fr



6 Bis Rue du Temple,
33000 Bordeaux, France



www.enless-wireless.com